



2017 special Gluers, series 130

From the basic machine



to

Complete production lines according customer configuration





Videos : Please visit our homepage to view videos on our web site

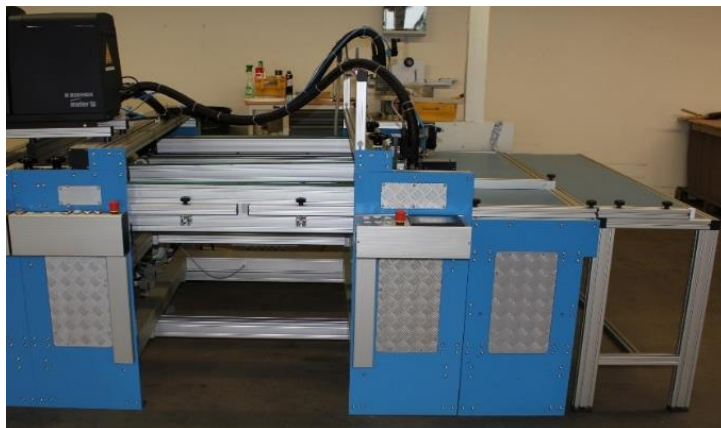


Unigluer, model 132

Features:

- 132 Universal Gluer
- Manual feeding station

The feeding station is removable for future expansion. It contains a build-in shelf for accessories and tools.



Working width : **1200 – 1400 - 1600 - 1800 - 2000 - 2200 - 2400 - 2600 mm (folded boxes)**

Gluing : From the inside or outside (hot melt and/or cold glue system)

Glue system : According customer requirements, (not included in the basic price).

Performance : Ca. 500 – 2.000 pcs / hour (depending on material, design and operator).

Material : Corrugated board (all flute qualities), Carton, cardboard

Electric supply : 3/400 V, 20 A, 50 Hz

Air supply : 6 bar (for the glue unit)

Size range : Width mm Length mm

Minimum	80	150
Maximum	As the working width (see above)	No limit

Price : (EUR)

132-1200	On request
132-1400	On request
132-1600	On request
132-1800	On request
132-2000	On request
132-2200	On request
132-2400	On request

134 Working Station



LUNDING Working Station (the original on the market) is an additional station, which eliminates most of the hand gluing operations.

In this station Displays, More Part Displays or packaging and other assembly gluing operations are rational and with high performance glued together. The station is operated by one person.

The high production tact in combination with the very quick set -up time is the fundament of a very competitive production of creative products in carton and corrugated materials.

The machine will rationalize your gluing department.

The station is situated after the Unigluer, the gluing station or the coming XY-section.

Working width : 1600-1800-2000-2200-2400 mm (folded)

Working length : 1800 mm or on request

Price :	(EUR)
----------------	--------------

132-1200	On request
132-1400	On request
132-1600	On request
132-1800	On request
132-2000	On request
132-2200	On request
132-2400	On request



135 Pressing station



The pressing station is specially designed for displays, where different heights of material are to be pressed together at the same time, until the hotmelt glue sticks. When a display or a box enters the pressing belts, the object will be hold tight together so that the hotmelt will have an optimum of surface to connect. Thereby it is secured, that the glue bond do not separate and weaken.

Every individual pressing belt can be adjusted separately in the height. The belts are placed exactly over the position, where the glue on the blanks is applied. Thereby you are able for instance to glue 10 mm in the one side of a display and only 5 mm in the other side.

Lower pressing belts

1 x 80 mm wide pressure belt, situated in the middle.

4 x 40 mm wide pressure belts.

Upper pressing belts (spring loaded):

1 x 80 mm wide pressure belt

2 x 40 mm pressure belts, one left and one right of the 80 mm belt

The special design eliminates deformation of material, when passing through the station.

Performance

Choice between tact or continuously. Speed is adjustable

Materials:

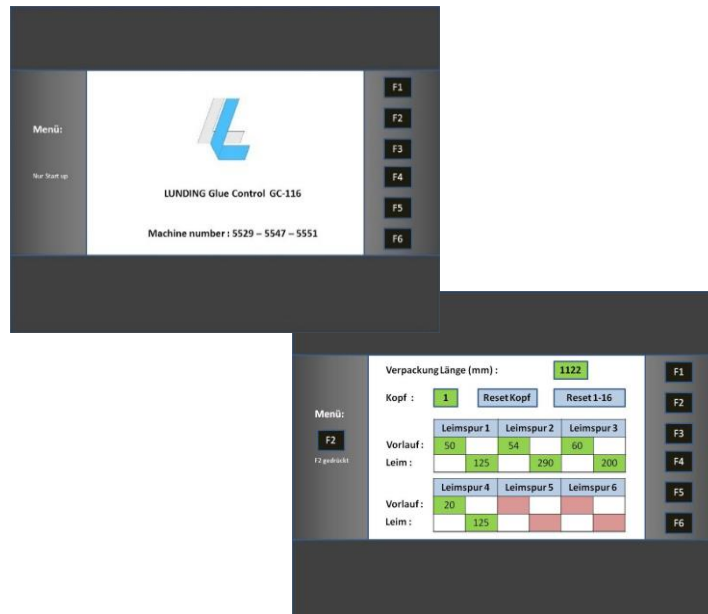
Corrugated (all two-sided qualities) - Carton - Cardboard - Foamboard

Range width : Min 80 mm , Max 1600 mm folded

Range length : Min 300 mm , Max no limit



LUNDING Glue control, GC-116



The LUNDING Glue control GC-16 system is capable of controlling up to 16 glue heads or other functions.

The control is integrated in the operator panel of the machine.

Each head can glue up to 6 free programmable tracks.

Normally the glue control is configured as follows:

- Function 1-6 Hot melt gun 1 - 6
- Function 7-12 Cold glue gun 1 - 6
- Function 13 - 14 Tape dispenser 1 - 2
- Function 15 - 16 Diagonal and zig zag glue options

The system can be adapted to customer requirements, too.



900 hot melt systems



Our recommendation : Meler series 6100

Piston pump unit

Capacity: 10 Liter

Melting capacity: 30 kg / h

Hose connections: 2 as standard

Expansion up to 6 hoses on request

Measurements: 671 x 341 x 481

Weight: 45 kg

Glue guns:

The glue guns are specially designed for perfect function in our machines:

The glue hose, electric cable and air hose are all connected on the top, which is an advantage, as they thereby are not in the way, when the gun is angled in order to reach further into an partly folded box.

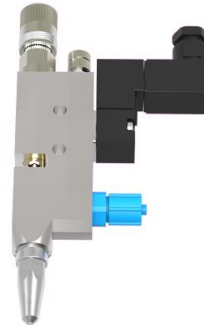


901 Cold glue system, system



Cold glue central pump

The cold glue pump supplies glue for up to 6 glue guns.



Cold glue gun

The cold glue gun will supply cold glue to the subject according to the pre-set of the glue control.

We recommend cold glue systems from Nordson.

This systems is between the most reliable system within cold glue systems.

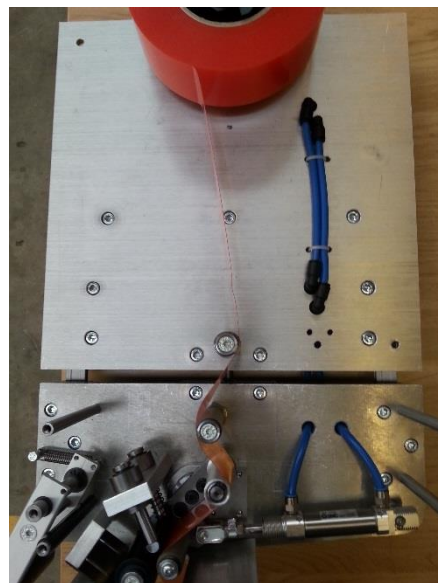
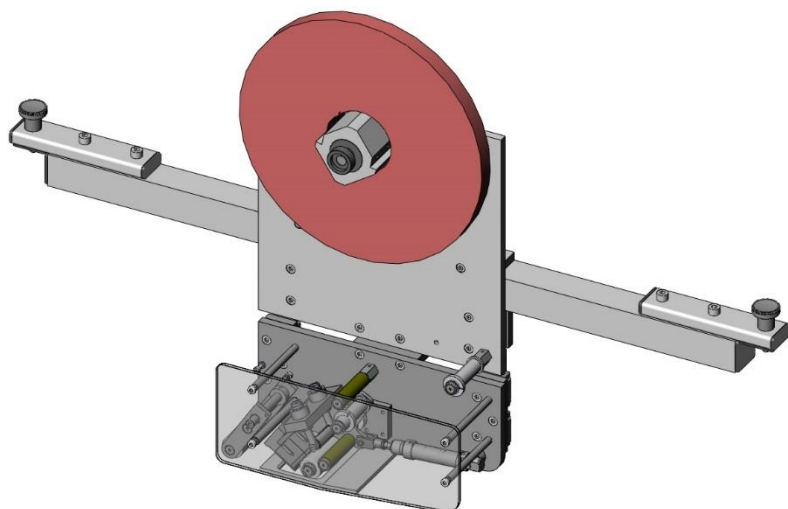
The cold glue system consists of :

- A pneumatic glue pump
- Central high pressure hose
- Connector, where up to 4 glue heads can be installed
- (by use of extra connector even more cold glue heads can be installed)
- Hose to each glue head
- Pneumatic glue head with nozzle 0.8 mm.

The cold glue system glue heads are, different to the hot melt system, completely removable from the LUNDING machines. Thereby it is very easy to clean in water. It is connected in only a few minutes to the machine again after cleaning.



LUNDING Tape dispenser 120-050



With this optional equipment for the LUNDING special gluers, it is possible to apply tape stripes and tear stripes in different lengths and on specific locations of a box or display.

As the tape applicator is working just like a glue gun, it will automate the process and eliminate manual working process.

Up to 4.000 tape stripes per hour is possible, depending of the feeding conditions.

Even very short stripes is possible to apply.

Max length is 8000 mm (314")

Core : 76 mm (industrial standard)

Roll diameter : Up to 500 mm is possible in order to prevent too often stops for reloading.

Tape width : 15 - 50 mm or on request.



Module overview:

Customers can configure a machine line according to their exact specific requirements:

Model	Specification	Description
131	Manual feeding table	
132	Unigluer (main machine)	The basic machine for various gluing's
133	New station	Coming soon
134	Working station	For more-part boxes/Displays and assembly work
135	Pressing station	For secure and strong gluing of the object

Options:

116	Lunding glue control	Controls up to 16 heads with individually 6 tracks
120	Tape Dispensers	Applies tape stripes and tear stripes to objects
121	Silicon dispensers	Applies silicon paper to boxes / displays

Please notice :

A machine line can also be expanded with the 140 modules:

141	Automatic belt feeder
142	Gluing station
144	Taping station
146	Delivery



141 Automatic feeder



The Lunding belt-feeder consist of several direct-driven friction belts, individually adjustable.

Optionally, the feeder is also available with vacuum belts. The feeder feeds the blanks from a stack, feeding the lower blank. The advantage is, that the feeder is feeding non-stop. Reloading are done continuously to the top of the stack.

On each side of the blanks, side guides are placed in order to get an exact guiding into the machine. Two dispensers in front of the blanks, secure an exact feeding of only one blank at the time into the machine.

Performance	Continuously 0- 50 m / min or in tact.
Material	Cardboard from 350 g/m ² and all corrugated qualities.
Motor	1 x 0,75 kw
Electric	3 / 400 V, 16 A, 50 Hz, <u>or on request.</u> (The feeder is supplied from the Unigluer).